



# LED Product Catalogue

LED Product Catalogue

# Switch to LED



LED lighting has completely revolutionized the lighting market and offers the consumers huge savings as well as giving a peace of mind due to being highly energy efficient, long-lasting, and environmentally friendly. LED lights are being used in every type of lighting from house and office lighting, outdoor and industrial, car lights to traffic lights.



## Energy Efficient

One of the most important features of E-One LED lighting is energy efficiency. E-One LED lights use up to 80% less energy than your standard incandescent bulbs. For example, an E-One LED light bulb using only 7 watts is equivalent to the power of an incandescent bulb using 60 watts! Imagine changing all of your current lights to E-One LED lights for a combined, massive amount of energy saved. This can cut your current electric bill down to 1/5th of the cost in your lighting expenses.

## Long-Lasting

E-One LED products are extremely long-lasting and provide you with over 20,000 hours of light depending on the model. That is up to 20 times the life of an average incandescent bulb, and 2 times the life of an average CFL (Compact Fluorescent Light). If you were to use LED lights 8 hours per day, it would take you about 7 years until you needed a replacement bulb. This is especially useful for businesses with large, high-ceiling warehouses or factories that have large quantity of flood lights and bulbs that need regular maintenance.

## Environmentally Friendly

Aside from using much less energy and heat than other types of lighting technology, E-One LED lights are also environmentally friendly because they do not contain any toxic chemicals or hazardous substances. All E-One LED lights are mercury-free and leave a small carbon foot print.

## Durability

E-One LED bulbs do not contain any glass, filaments or tubes making them much more durable than other light bulbs. One of the reasons E-One LED bulbs are preferred over the standard Incandescent and CFL.

# Switch to LED



## Consistent, Beautiful Colors

E~One LED lights are available in a range of colours, from cool white (useful for when a clear white light is needed, for example in factories) to natural white (used to bring daylight indoors) to warm white (the colour that we are traditionally used to). In addition they can be provided in single colour or multi-colour. E~One LED lights provide a truly beautiful, consistent light. E~One LEDs give you the vibrant feeling of natural light, so you can rid of the headaches from those dull office fluorescent tubes that give off an annoying flicker near the end of their lifetimes. E~One LED bulbs don't flicker and don't create distracting hot spots or glares either.

## Cool Operating Temperatures

E~One LED lights are warm to the touch and give off a very low amount of heat in comparison to incandescent bulbs which waste 98% of their energy producing heat! Using E~One LED lights can help your company save on air conditioning or other cooling techniques used in order to balance the temperature due to the excessive amount of heat from other forms of lighting technology. This is also useful for places concerned with heat damage such as museums that have to be extra careful their art or displays will not suffer from the lighting they use.

## Cost Effective

Although E~One LED lights are slightly more expensive than standard incandescent, fluorescent and halogen lights, E~One LED lights pay themselves back within a few years and then continue to pay YOU back with the savings in energy and maintenance costs.

## Why switch to LED Lighting?

LED Lighting upgrades are one of the easiest measures any business can take to improve their efficiency, lower costs, and add to the bottom line. Upgrades to your existing fixtures will not only save you money in energy costs, but in maintenance costs as well. With LED being the most efficient form of lighting on the market, it makes sense to upgrade to today!

## Benefits of E~One LED Lighting

**Extremely efficient** – 80% more efficient than traditional lighting

**Extremely long life expectancy** from 20,000 hours upwards!

**Low heat output** – save on HVAC costs!

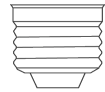
**Color Control** – LED's won't fade over time

**No maintenance** – never change a light bulb again!

**SAVE MONEY** – Significantly reduce your energy bill!

**Environmentally Friendly** – LEDs contain no heavy metals like mercury!

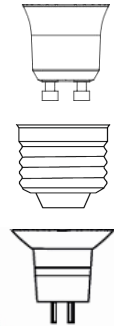
**High Quality Light** – LED's can have CRI's as high as 96!



Model : E1~GB

Watts	3W	5W	7W	9W
Type	Globe	Globe	Globe	Globe
LED Color	35K & 60K	35K & 60K	35K & 60K	35K & 60K
LED Chip	Taiwan	Taiwan	Taiwan	Taiwan
Brightness	270 Lumens	450 Lumens	630 Lumens	890 Lumens
Voltage	85V ~ 265V	85V ~ 265V	85V ~ 265V	85V ~ 265V
Lifespan	20000 hours	20000 hours	20000 hours	20000 hours
Material	Al & PBT	Al & PBT	Al & PBT	Al & PBT
Dimension	122 x 60	125 x 70	125 x 70	125 x 70
Temperature	-35 C ~ 50 C	-35 C ~ 50 C	-35 C ~ 50 C	-35 C ~ 50 C
Use	Indoor	Indoor	Indoor	Indoor





## Model : E1~SB

Watts	4W	4W	4W
Type	GU10	E27	MR16
LED Color	35k & 60k	35k & 60k	35k & 60k
LED Chip	Taiwan	Taiwan	Taiwan
Brightness	360 Lumens	360 Lumens	360 Lumens
Voltage	85V ~ 265V	85V ~ 265V	12V ~ 14V
Lifespan	20000 hours	20000 hours	20000 hours
Material	Al & PC	Al & PC	Al & PC
Dimension	60 x 48	64 x 48	55 x 48
Temperature	-35 C ~ 50 C	-35 C ~ 50 C	-35 C ~ 50 C
Use	Indoor	Indoor	Indoor



## Model : E1~CB

Watts	E1C - 3W
Type	Candle
LED Color	3500 (Warm) & 6000(White)
LED Chip	Taiwan
Brightness	270 Lumens
Voltage	85V ~ 265V
Lifespan	20000 hours
Material	AL & PC
Dimension	108mm x 35mm
Temperature	-35 C ~ 50 C
Use	Indoor



## Model : E1 ~ WRP

Watt	3W	5W	9W	12W
Type	Ceiling	Ceiling	Ceiling	Ceiling
LED Color	35k & 60k	35k & 60k	35k & 60k	35k & 60k
LED Chip	Taiwan	Taiwan	Taiwan	Taiwan
Brightness	165 Lumens	275 Lumens	490 Lumens	660 Lumens
Voltage	85V ~ 265V	85V ~ 265V	85V ~ 265V	85V ~ 265V
Lifespan	20000 hours	20000 hours	20000 hours	20000 hours
Material	Al & PC	Al & PC	Al & PC	Al & PC
Dimension (O)	90 dia	120 dia	146 dia	170 dia
Dimension (I)	70 dia	100 dia	130 dia	150 dia
Temperature	-35 C ~ 50 C	-35 C ~ 50 C	-35 C ~ 50 C	-35 C ~ 50 C
Use	Indoor	Indoor	Indoor	Indoor



## Model : E1 ~ WRP

Watt	15W	18W	24W
Type	Ceiling	Ceiling	Ceiling
LED Color	35k & 60k	35k & 60k	35k & 60k
LED Chip	Taiwan	Taiwan	Taiwan
Brightness	820 Lumens	990 Lumens	1370 Lumens
Voltage	85V ~ 265V	85V ~ 265V	85V ~ 265V
Lifespan	20000 hours	20000 hours	20000 hours
Material	Al & PC	Al & PC	Al & PC
Dimension (O)	195 dia	225 dia	300 dia
Dimension (I)	170 dia	200 dia	280 dia
Temperature	-35 C ~ 50 C	-35 C ~ 50 C	-35 C ~ 50 C
Use	Indoor	Indoor	Indoor



## Model : E1 ~WSP

Watt	3W	5	9	12
Type	Ceiling	Ceiling	Ceiling	Ceiling
LED Color	35k & 60k	35k & 60k	35k & 60k	35k & 60k
LED Chip	Taiwan	Taiwan	Taiwan	Taiwan
Brightness	165 Lumens	275 Lumens	490 Lumens	660 Lumens
Voltage	85V ~ 265V	85V ~ 265V	85V ~ 265V	85V ~ 265V
Lifespan	20000 hours	20000 hours	20000 hours	20000 hours
Material	Al & PC	Al & PC	Al & PC	Al & PC
Dimension (O)	85 x 85	120 x 120	145 x 145	170 x 170
Dimension (I)	70 x 70	100 x 100	130 x 130	150 x 150
Temperature	-35 C ~ 50 C	-35 C ~ 50 C	-35 C ~ 50 C	-35 C ~ 50 C
Use	Indoor	Indoor	Indoor	Indoor





## Model : E1~WSP

Watt	15W	18W	24W
Type	Ceiling	Ceiling	Ceiling
LED Color	35k & 60k	35k & 60k	35k & 60k
LED Chip	Taiwan	Taiwan	Taiwan
Brightness	820 Lumens	990 Lumens	1370 Lumens
Voltage	85V ~ 265V	85V ~ 265V	85V ~ 265V
Lifespan	20000 hours	20000 hours	20000 hours
Material	Al & PC	Al & PC	Al & PC
Dimension (O)	195 x 195	225 x 225	300 x 300
Dimension (I)	170 x 170	200 x 200	280 x 280
Temperature	-35 C ~ 50 C	-35 C ~ 50 C	-35 C ~ 50 C
Use	Indoor	Indoor	Indoor



## Model : E1~SP

Watt	16W	20W	40W
Type	Panel	Panel	Panel
LED Color	35k & 60k	35k & 60k	35k & 60k(White)
LED Chip	Taiwan	Taiwan	Taiwan
Brightness	1680 Lumens	2100 Lumens	4200 Lumens
Voltage	85V ~ 265V	85V ~ 265V	85V ~ 265V
Lifespan	20000 hours	20000 hours	20000 hours
Material	Al & PC	Al & PC	Al & PC
Dimension	300 x 300	300 x 600	300 x 1200
Temperature	-35 C ~ 50 C	-35 C ~ 50 C	-35 C ~ 50 C
Use	Indoor	Indoor	Indoor



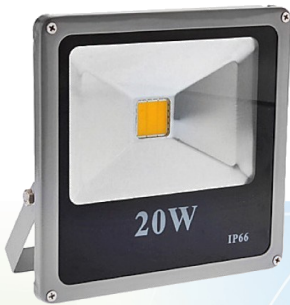
## Model : E1 ~SP

Watt	36/40W	72W
Type	Panel	Panel
LED Color	35k & 60k(White)	35k & 60k(White)
LED Chip	Taiwan	Taiwan
Brightness	3780/4200 Lumens	7560 Lumens
Voltage	85V ~ 265V	85V ~ 265V
Lifespan	20000 hours	20000 hours
Material	Al & PC	Al & PC
Dimension	600 x 600	600 x 1200
Temperature	Al & PC	Al & PC
Use	Indoor	Indoor



## Model : E1~FL

Watt	10W
LED Color options	35K & 65K
LED Chip	Taiwan
Brightness	810 Lumens
Voltage	85V ~ 265V
Lifespan	20000 hours
Material	Al & Glass
Dimension	125mm x 118mm x 40mm
Temperature	-35 C ~ 60 C
Use	Outdoor IP66



## Model : E1~FL

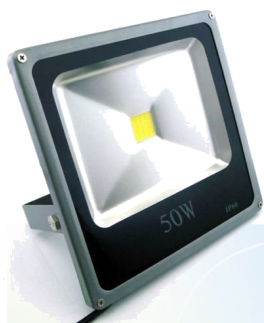
Watt	20W
LED Color options	35K & 65K
LED Chip	Taiwan
Brightness	1800 Lumens
Voltage	85V ~ 265V
Lifespan	20000 hours
Material	Al & Glass
Dimension	125mm x 118mm x 40mm
Temperature	-35 C ~ 60 C
Use	Outdoor IP66





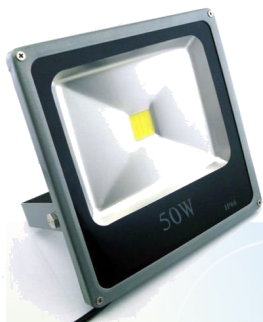
Model : E1 ~ FL

Watt	30W
LED Color options	35K & 65K
LED Chip	Taiwan
Brightness	2700 Lumens
Voltage	85V ~ 265V
Lifespan	20000 hours
Material	Al & Glass
Dimension	125mm x 118mm x 40mm
Temperature	-35 C ~ 60 C
Use	Outdoor IP66



## Model : E1 ~ FL

Watt	50W
LED Color options	35K & 65K
LED Chip	Taiwan
Brightness	4500Lumens
Voltage	85V ~ 265V
Lifespan	20000 hours
Material	Al & Glass
Dimension	125mm x 118mm x 40mm
Temperature	-35 C ~ 60 C
Use	Outdoor IP66



## Model : E 1 ~ FL

Watt	100W
LED Color options	35K & 65K
LED Chip	Taiwan
Brightness	9000Lumens
Voltage	85V ~ 265V
Lifespan	20000 hours
Material	Al & Glass
Dimension	125mm x 118mm x 40mm
Temperature	-35 C ~ 60 C
Use	Outdoor IP66



## Model : E1~GRC

Watts	3W	5W	7W
Type	Downlight	Downlight	Downlight
LED Color	35k & 65k	35k & 65k	35k & 65k
LED Chip	Taiwan	Taiwan	Taiwan
Brightness	285 Lumens	475 Lumens	665 Lumens
Voltage	85V ~ 265V	85V ~ 265V	85V ~ 265V
Lifespan	20000 hours	20000 hours	20000 hours
Material	Al & PC	Al & PC	Al & PC
Dimension (O)	90 dia	110 dia	110 dia
Dimension (I)	70 dia	85 dia	85 dia
Temperature	-35 C ~ 50 C	-35 C ~ 50 C	-35 C ~ 50 C
Use	Indoor	Indoor	Indoor



## Model : E1~WSC

Watts	3W	5W	7W
Type	Downlight	Downlight	Downlight
LED Color	35k & 65k	35k & 65k	35k & 65k
LED Chip	Taiwan	Taiwan	Taiwan
Brightness	285 Lumens	475 Lumens	665 Lumens
Voltage	85V ~ 265V	85V ~ 265V	85V ~ 265V
Lifespan	20000 hours	20000 hours	20000 hours
Material	Al & PC	Al & PC	Al & PC
Dimension (O)	90 x 90	120 x 120	120 x 120
Dimension (I)	65 dia	85 dia	85 dia
Temperature	-35 C ~ 50 C	-35 C ~ 50 C	-35 C ~ 50 C
Use	Indoor	Indoor	Indoor





## Model : E1~WRC

Watts	3W	5W	7W
Type	Downlight	Downlight	Downlight
LED Color	35k & 65k	35k & 65k	35k & 65k
LED Chip	Taiwan	Taiwan	Taiwan
Brightness	285 Lumens	475 Lumens	665 Lumens
Voltage	85V ~ 265V	85V ~ 265V	85V ~ 265V
Lifespan	20000 hours	20000 hours	20000 hours
Material	Al & PC	Al & PC	Al & PC
Dimension (O)	90 dia	120 dia	120 dia
Dimension (I)	65 dia	85 dia	85 dia
Temperature	-35 C ~ 50 C	-35 C ~ 50 C	-35 C ~ 50 C
Use	Indoor	Indoor	Indoor



Model : E 1 ~ BRC

Watts	3W	5W
Type	Downlight	Downlight
LED Color options	35k & 60k	35k & 60k
LED Chip	Taiwan	Taiwan
Brightness	285 Lumens	475 Lumens
Voltage	85V ~ 265V	85V ~ 265V
Lifespan	20000 hours	20000 hours
Material	Al & PC	Al & PC
Dimension (O)	70 dia	88 dia
Dimension (I)	52 dia	70 dia
Temperature	-35 C ~ 50 C	-35 C ~ 50 C
Use	Indoor	Indoor



## Model : E1 ~ TL

Watts	10W	20W
Type	T8 tubelight	T8 tubelight
LED Color options	60k	60k
LED Chip	China	China
Brightness	920 Lumens	2080 Lumens
Voltage	85V ~ 265V	85V ~ 265V
Lifespan	20000 hours	20000 hours
Material	Al & PC	Al & PC
Diameter (mm)	30	30
Length (mm)	600	1200
Temperature	-35 C ~ 50 C	-35 C ~ 50 C
Use	Indoor	Indoor

